

Name: _____

Number: _____

Prove All Answers

- 13** Fox squirrels live in the trees of city parks throughout Texas. Each spring they build nests of twigs and leaves in the tops of the trees. Fox squirrels are often found near park benches, waiting to be fed by visitors.



Fox squirrel

For fox squirrels, which of these is a learned behavior?

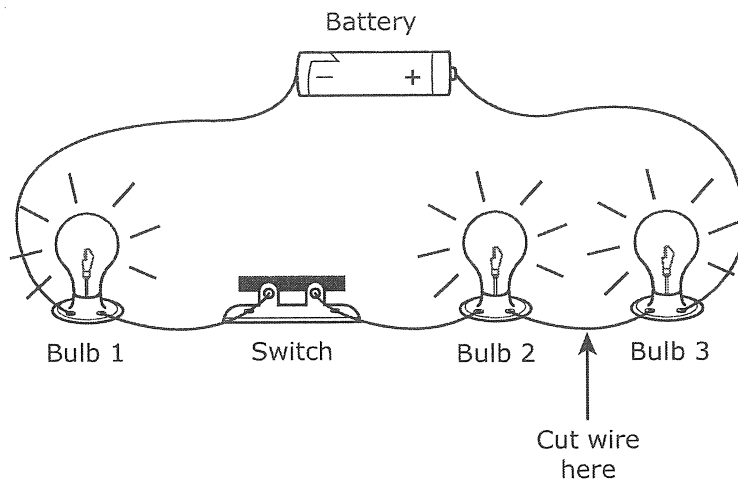
- A** Building a nest each spring
- B** Taking food from people
- C** Having a long, bushy tail
- D** Having sharp claws

- 14 A student measures the temperature of water being heated on a hot plate. The student observes that the temperature of the water is 53°C . How many more degrees Celsius must the temperature rise before it reaches the boiling temperature of water?

Record your answer and fill in the bubbles on your answer document. Be sure to use the correct place value.

			.
0	0	0	
1	1	1	
2	2	2	
3	3	3	
4	4	4	
5	5	5	
6	6	6	
7	7	7	
8	8	8	
9	9	9	

-
- 15 Which of the following events in the water cycle is an example of solar energy being absorbed?
- A Water vapor condensing to form clouds
 - B Water evaporating from the surface of an ocean
 - C Rain freezing as it falls toward the ground
 - D Clouds releasing precipitation over a mountain



16 The diagram shows a series circuit with three lit bulbs. How many of the bulbs will remain lit if the wire is cut at the point shown by the arrow?

- F** 0
- G** 1
- H** 2
- J** 3

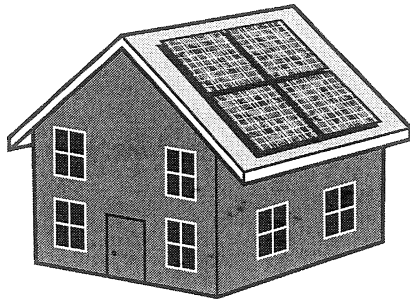
- 17 The diagram below shows the sequence of the processes that turn solid rock into sandstone.



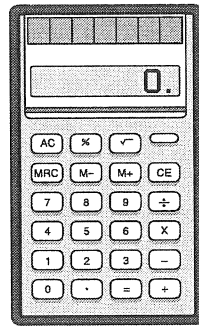
Which two processes best complete this diagram?

- A Melting and cooling
- B Erosion and compaction
- C Compaction and cementation
- D Evaporation and dissolving

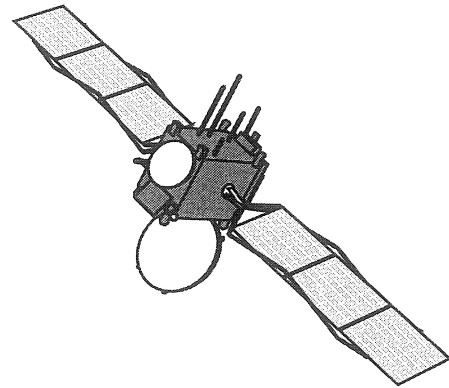
18 Three different objects that use the same source of energy are shown below.



Energy-efficient house



Calculator

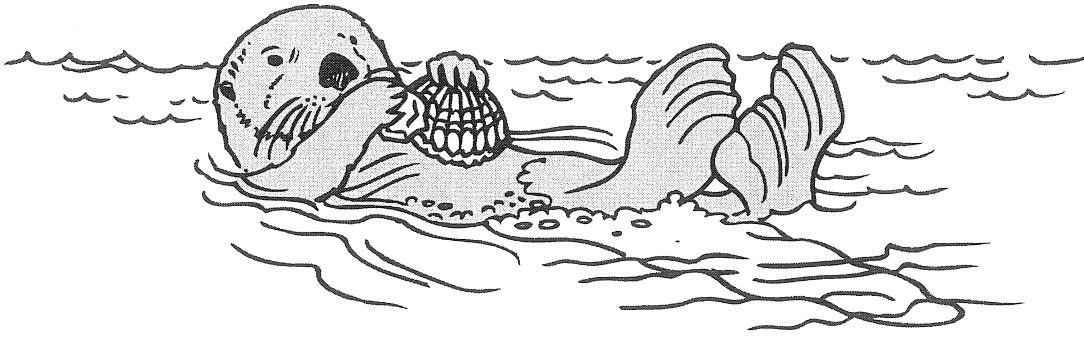


Satellite

What is the energy source for these objects?

- F Light energy
- G Mechanical energy
- H Sound energy
- J Electrical energy

19 A scientist observes sea otters using rocks to break open clamshells.



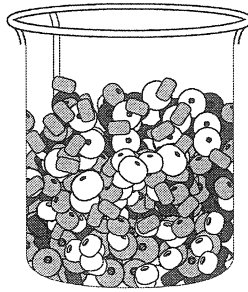
Which of these investigations would best help the scientist determine whether this skill is a learned or an inherited behavior?

- A Determining what sizes and kinds of rocks are used most often by sea otters
- B Determining whether shellfish are an important food source in the diet of sea otters
- C Raising young sea otters away from adult otters that use rocks and observing whether the young otters use rocks
- D Observing families of sea otters over time to see whether adults that use rocks have offspring that use rocks

20 Glaciers are masses of ice that move slowly on land. Which of these features was most likely formed by a glacier?

- F** A wide valley
- G** A deep ocean
- H** A lava flow
- J** A mountain range

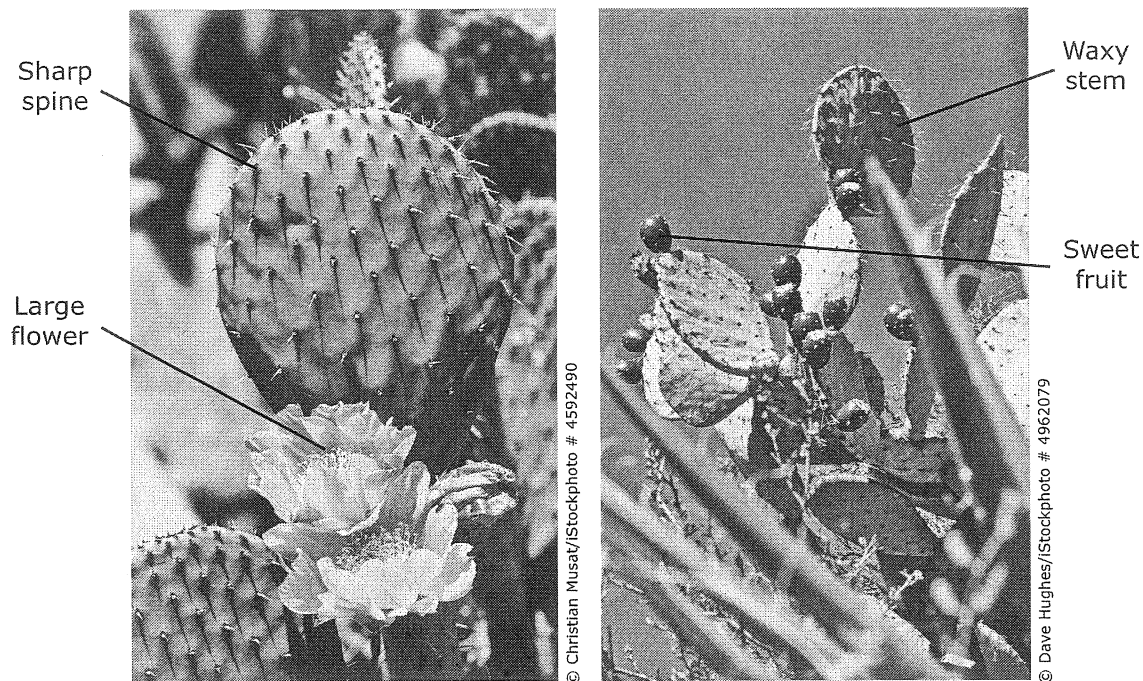
21 A mixture of beads was placed in a container, as shown below. The beads are of various sizes, and each one is made of plastic, glass, or steel.



The mixture would be easy to separate because all the beads —

- A** are less dense than water
- B** are solids
- C** have the same mass
- D** are attracted to a magnet

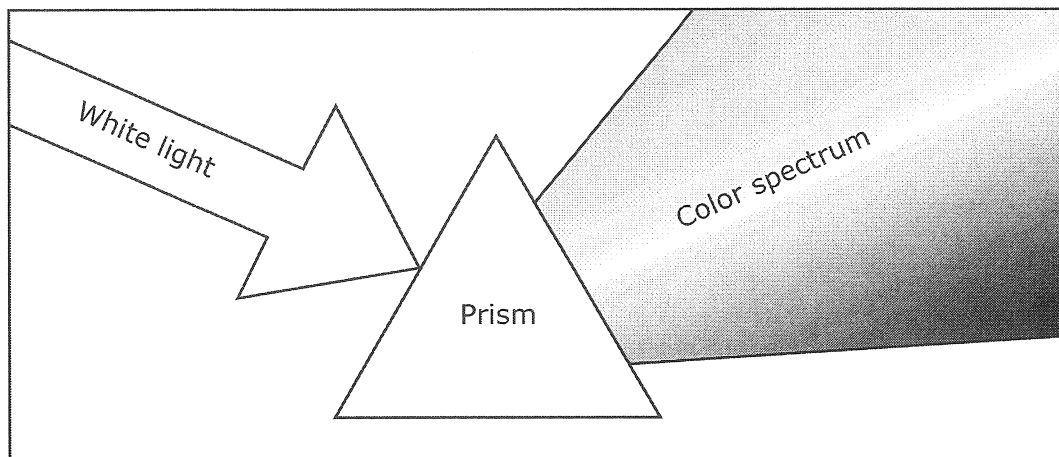
Prickly Pear Cactus



22 Which two traits best help a cactus conserve water in the dry conditions of a West Texas desert ecosystem?

- F** Large flowers and sweet fruit
- G** Sweet fruit and sharp spines
- H** Sharp spines and waxy stems
- J** Waxy stems and large flowers

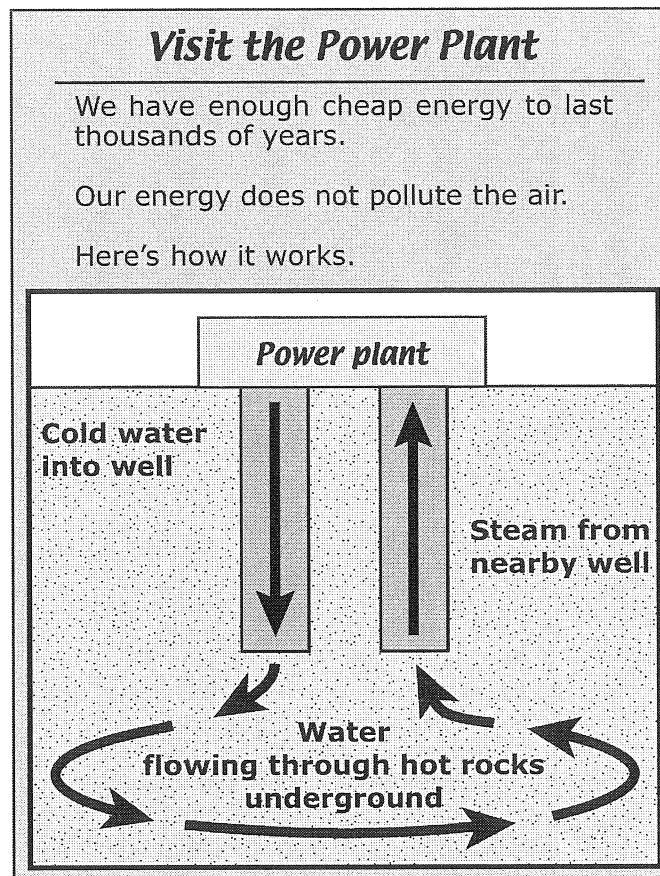
23 When light travels through air into a prism, it bends and separates into many colors.



In which other situation does light bend?

- A When light moves through air into water
- B When light hits a wall
- C When light passes through outer space
- D When light hits a mirror

24 The poster shown below advertises tours of a power plant.



This power plant produces electricity most likely by using —

- F fossil fuels
- G biofuels
- H solar energy
- J geothermal energy